



SUBMERSIBLE SEWAGE PUMP



EWS



More info call us:
021-4612462

Visit us for more
www.elkanmepindo.com



EWS Submersible Sewage Pump

Applications

- Drainage of wastewater from the attenuation tank, purifying tank and sewage tank in water treatment plant
- Drainage of waste water containing fibrous additives from leather factory and food processing factory.
- Sewage management, accumulated water, septic tank, stock farm.
- Pumping sewage for hotels, restaurants, schools and public buildings

Pump

- High-efficiency & anti-clogging enclosed channel impeller
- Flexible installations with hoses, pipes or quick-coupling systems
- Float switch as standard accessory
- Double-end mechanical seal
- Stainless steel welded shaft
- Liquid temperature: 0 - 40 °C
- Liquid PH value: 4 - 10
- Max. immersion depth: 5 m

Motor

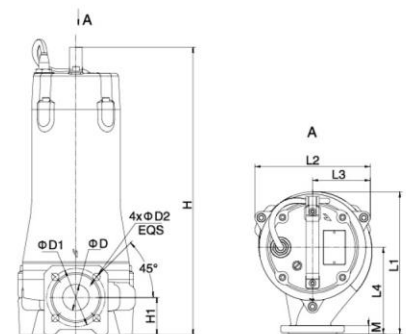
- Frequency/Pole number: 50 Hz/2
- Insulation class: F
- Protection class: IPX8
- Bearing: Ball type

Technical Data

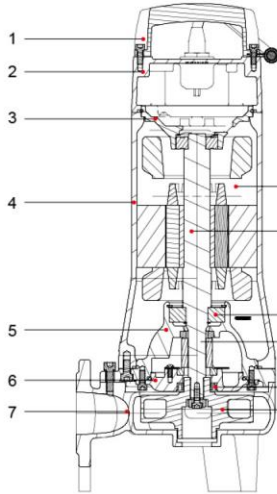
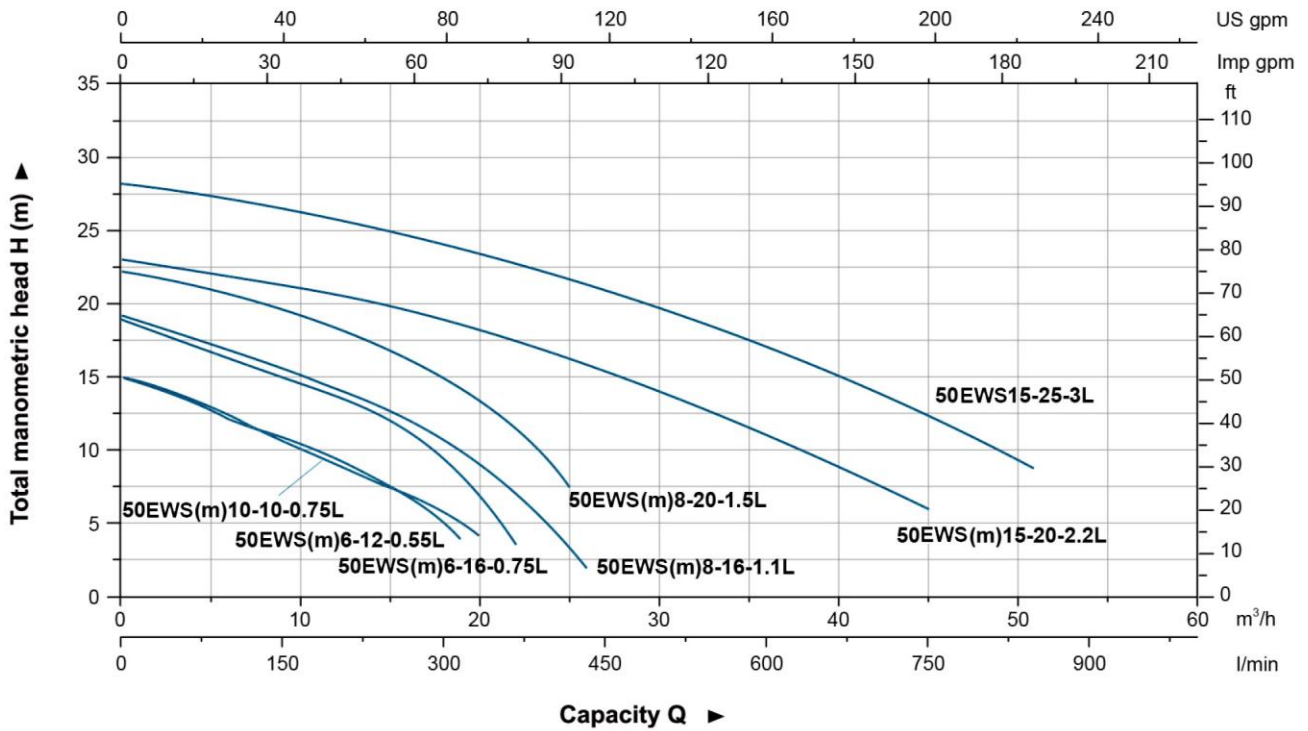
Model		Discharge mm (inch)	Power		Rated Flow (m ³ /h)	Max. Flow (m ³ /h)	Rated Head (m)	Max. Head (m)	Max. Solid Dia (mm)
Single Phase	Three Phase		kW	HP					
50EWSm6-12-0.55L	50EWS6-12-0.55L	50 (2")	0.55	0.75	6	19	12	15	20
50EWSm6-16-0.75L	50EWS6-16-0.75L	50 (2")	0.75	1	6	22	16	19	20
50EWSm10-10-0.75L	50EWS10-10-0.75L	50 (2")	0.75	1	10	20	10	15	20
50EWSm8-16-1.1L	50EWS8-16-1.1L	50 (2")	1.1	1.5	8	26	16	19	15
50EWSm8-20-1.5L	50EWS8-20-1.5L	50 (2")	1.5	2	8	25	20	22	15
50EWSm15-20-2.2L	50EWS15-20-2.2L	50 (2")	2.2	3	15	45	20	23	25
-	50EWS15-25-3L	50 (2")	3	4	15	51	25	27	25

Dimension

Model		L1	L2	L3	L4	H		H1	D	D1	D2	M
Single Phase	Three Phase					1~	3~					
50EWSm6-12-0.55L	50EWS6-12-0.55L	212	184	96	120	461	461	65	45	110	14	14
50EWSm6-16-0.75L	50EWS6-16-0.75L					479	479					
50EWSm10-10-0.75L	50EWS10-10-0.75L	210	191	96	135	570	529	70	47	110	14	16
50EWSm8-16-1.1L	50EWS8-16-1.1L	223				571	530					
50EWSm8-20-1.5L	50EWS8-20-1.5L	227	221	112	163	-	561	70	50	110	14	16
50EWSm15-20-2.2L	50EWS15-20-2.2L	268				-	561					
-	50EWS15-25-3L	268	221	112	163	-	561	70	50	110	14	16



Hydraulic Performance Curves



Materials Table

No.	Part	Material
1	Handle	ZG45
2	Upper cover	HT200
3	Upper bearing seat	HT200
4	Motor body	HT200
5	Oil chamber	HT200
6	Pump cover	HT200
7	Pump body	HT200
8	Impeller	HT200
9	Oil seal	
10	Mechanical seal	Upper:SiC/Carbon Lower:SiC/SiC
11	Bearing	
12	Shaft (Stainless Steel)	
13	Stator	

Package Information

Model		GW (kg)		L (mm)	W (mm)	H (mm)
Single Phase	Three Phase	1~	3~			
50EWSm6-12-0.55L	50EWS6-12-0.55L	24.7	24	746	254	286
50EWSm6-16-0.75L	50EWS6-16-0.75L	26	25.3	746	254	286
50EWSm10-10-0.75L	50EWS10-10-0.75L	25.8	25	746	254	286
50EWSm8-16-1.1L	50EWS8-16-1.1L	33.6	31.7	749	289	368
50EWSm8-20-1.5L	50EWS8-20-1.5L	43.2	38.4	924	284	363
50EWSm15-20-2.2L	50EWS15-20-2.2L	44.9	46.3	924	284	363
-	50EWS15-25-3L	-	49.5	874	284	363



EWS Submersible Sewage Pump

Applications

- Drainage of wastewater from the attenuation tank, purifying tank and sewage tank in water treatment plant
- Drainage of waste water containing fibrous additives from leather factory and food processing factory.
- Sewage management, accumulated water, septic tank, stock farm.
- Pumping sewage form hotels, restaurants, schools and public buildings

Pump

- High-efficiency & anti-clogging enclosed channel impeller
- Flexible installations with hoses, pipes or quick-coupling systems
- Float switch as standard accessory for single phase ($\leq 1.1\text{kW}$)
- Double-end mechanical seal
- Stainless steel welded shaft
- Liquid temperature: 0 - 40 °C
- Liquid PH value: 4 - 10
- Max. immersion depth: 5 m

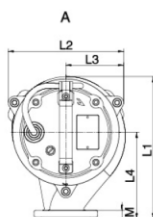
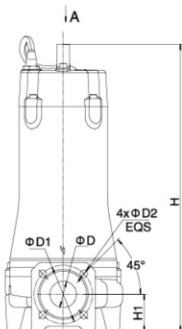
Motor

- Frequency/Pole number: 50 Hz/2
- Insulation class: F
- Protection class: IPX8
- Bearing: Ball type

Technical Data

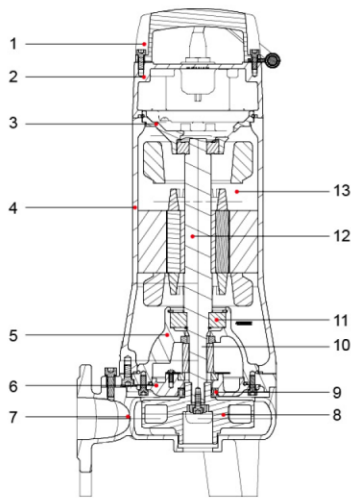
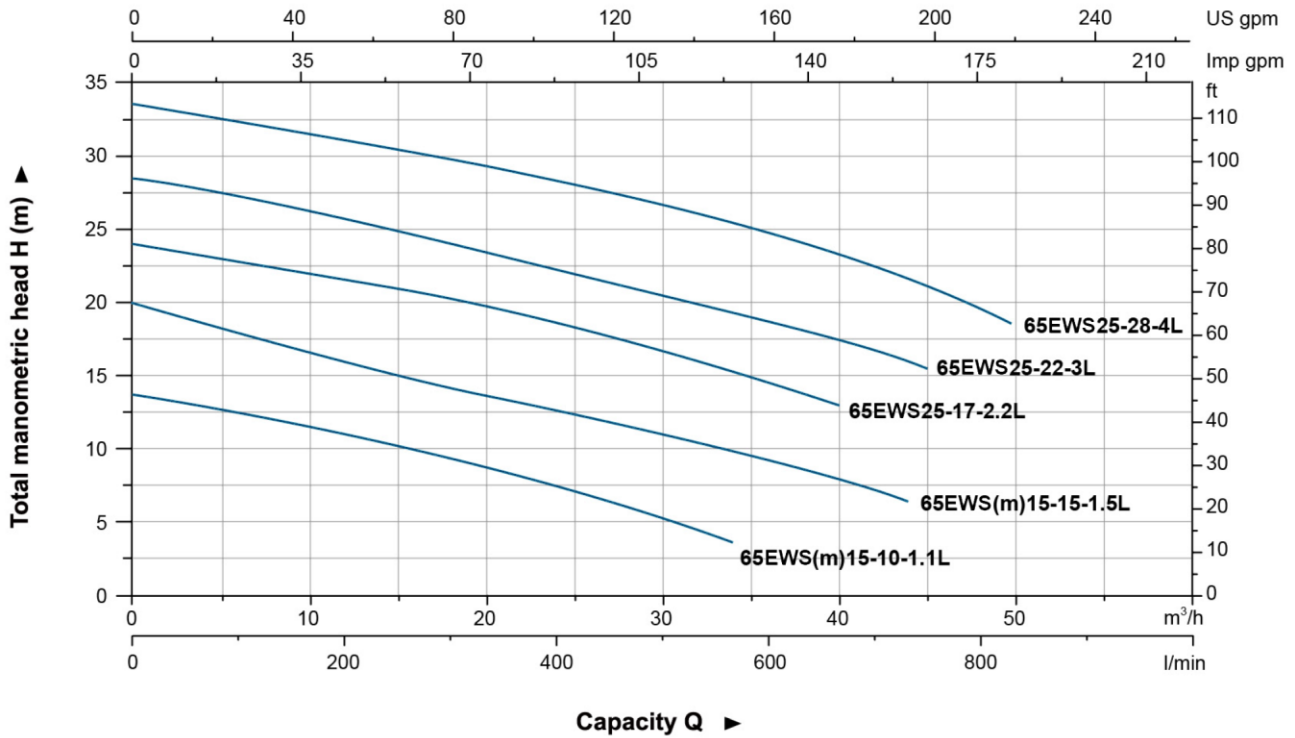
Model		Discharge mm (inch)	Power		Rated Flow (m ³ /h)	Max. Flow (m ³ /h)	Rated Head (m)	Max. Head (m)	Max. Solid Dia (mm)
Single Phase	Three Phase		kW	HP					
65EWSm15-10-1.1L	65EWS15-10-1.1L	65 (2.5")	1.1	1.5	15	34	10	14	25
65EWSm15-15-1.5L	65EWS15-15-1.5L	65 (2.5")	1.5	2	15	44	15	20	25
-	65EWS25-17-2.2L	65 (2.5")	2.2	3	25	40	17	24	25
-	65EWS25-22-3L	65 (2.5")	3	4	25	45	22	28.5	25
-	65EWS25-28-4L	65 (2.5")	4	5.5	25	50	28	31.5	25

Dimension



Model		L1	L2	L3	L4	H		H1	D	D1	D2	M
Single Phase	Three Phase					1~	3~					
65EWSm15-10-1.1L	65EWS15-10-1.1L	288	225	117	178	490	490	77.5	65	130	14	16
65EWSm15-15-1.5L	65EWS15-15-1.5L					581	540					
-	65EWS25-17-2.2L					-	540					
-	65EWS25-22-3L					-	571					
-	65EWS25-28-4L											

Hydraulic Performance Curves



Materials Table

No.	Part	Material
1	Handle	ZG45
2	Upper cover	HT200
3	Upper bearing seat	HT200
4	Motor body	HT200
5	Oil chamber	HT200
6	Pump cover	HT200
7	Pump body	HT200
8	Impeller	HT200
9	Oil seal	
10	Mechanical seal	Upper SiC/Carbon Lower SiC/SiC
11	Bearing	
12	Rotor	
13	Stator	

Package Information

Model		GW (kg)		L (mm)	W (mm)	H (mm)	Quantity (PCS/20*TEU)
Single Phase	Three Phase	1~	3~				
65EWSm15-10-1.1L	65EWS15-10-1.1L	37.9	35.8	749	289	368	354
65EWSm15-15-1.5L	65EWS15-15-1.5L	45.7	41.9	924	284	363	294
-	65EWS25-17-2.2L	-	44.1	924	284	363	294
-	65EWS25-22-3L	-	52	874	284	363	316
-	65EWS25-28-4L	-	55.1	874	284	363	316



EWS Submersible Sewage Pump

Applications

- Drainage of wastewater from the attenuation tank, purifying tank and sewage tank in water treatment plant
- Drainage of waste water containing fibrous additives from leather factory and food processing factory.
- Sewage management, accumulated water, septic tank, stock farm.
- Pumping sewage form hotels, restaurants, schools and public buildings

Pump

- High-efficiency & anti-clogging enclosed channel impeller
- Flexible installations with hoses, pipes or quick-coupling systems
- Float switch as standard accessory for single phase ($\leq 1.1\text{kW}$)
- Double-end mechanical seal
- Stainless steel welded shaft
- Liquid temperature: 0 - 40 °C
- Liquid PH value: 4 - 10
- Max. immersion depth: 5 m

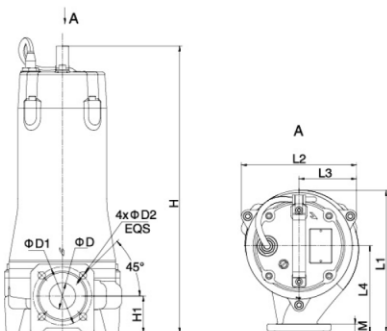
Motor

- Frequency/Pole number: 50 Hz/2
- Insulation class: F
- Protection class: IPX8
- Bearing: Ball type

Technical Data

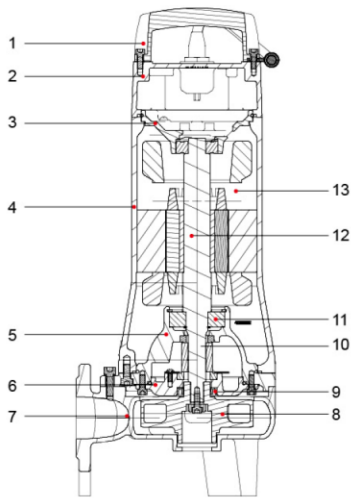
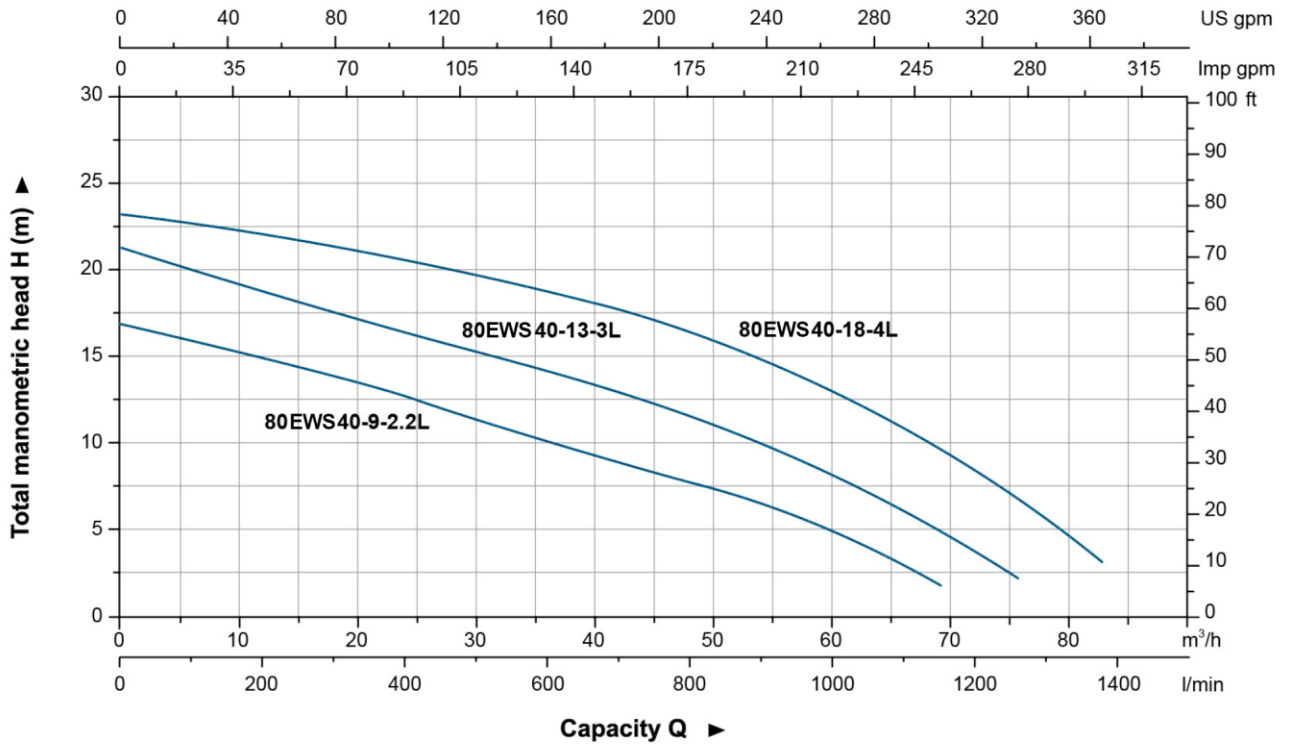
Model	Discharge mm (inch)	Power		Rated Flow (m ³ /h)	Max. Flow (m ³ /h)	Rated Head (m)	Max. Head (m)	Max. Solid Dia (mm)
		kW	HP					
80 EWS 40-9-2.2L	80(3")	2.2	3	40	69.5	9	17	30
80 EWS 40-13-3L	80(3")	3	4	40	76	13	21	30
80 EWS 40-18-4L	80(3")	4	5.5	40	83	18	23	30

Dimension



Model	L1	L2	L3	L4	H	H1	D	D1	D2	M
80 EWS 40-9-2.2L	265	223	112	160	557	86	80	150	18	16
80 EWS 40-13-3L										
80 EWS 40-18-4L										

Hydraulic Performance Curves



Materials Table

No.	Part	Material
1	Handle	ZG45
2	Upper cover	HT200
3	Upper bearing seat	HT200
4	Motor body	HT200
5	Oil chamber	HT200
6	Pump cover	HT200
7	Pump body	HT200
8	Impeller	HT200
9	Oil seal	
10	Mechanical seal	Upper Sic/Carbon Lower Sic/Sic
11	Bearing	
12	Shaft (Stainless Steel)	
13	Stator	

Package Information

Model	GW (kg)	L (mm)	W (mm)	H (mm)	Quantity (PCS/20' TEU)
80EWS 40-9-2.2L	46.4	924	284	363	294
80EWS 40-13-3L	53.8	874	284	363	316
80EWS 40-18-4L	56.3	874	284	363	316



EWS Submersible Sewage Pump

Applications

- Used In pressure sewage system
- Drainage of wastewater from individual residences, apartment buildings, recreational developments
- Transferring wastewater of commercial buildings, industrial plants, wastewater sampling, small hospitals
- Schools, federal, state and local parks, wastewater drainage
- To transfer various wastewater and sewage

Pump

- Flexible installations with hoses, pipes or quick-coupling systems
- Double-end mechanical seal
- Stainless Steel welded shaft
- Liquid density $\leq 1.2 \times 10^3 \text{ kg/m}^3$
- Liquid temperature: 0 - 40 °C
- Liquid PH value: 4 - 10
- Max. immersion Depth: 5 m

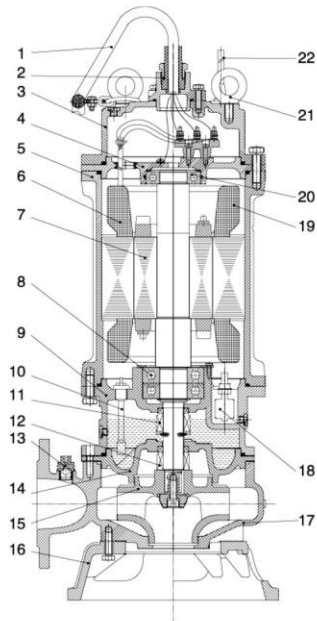
Motor

- Copper winding
- Insulation class: F
- Protection class: IPX8
- Voltage: 380V/50Hz 3-phase

Technical Data

Model	Motor Power		Speed r.p.m	Max. Flow m ³ /h	Max. Head m	Discharge mm (Inch)	Guide Rial Fitting	Max. Solid Dia mm	G.W kg	Packing Dimension mm
	kW	HP								
150 EWS 150-10-7.5/4	7.5	10	1450	300	16	150 (6")	150-150	75	160	1154x549x532
150 EWS 110-10-5.5/4	5.5	7.5	1450	260	12	150 (6")	150-150	75	155	1154x549x532
150 EWS 100-10-7.5	7.5	10	2900	150	20	150 (6")	150-150	35	120	1059x414x469
100 EWS 65-22-7.5	7.5	10	2900	108	31	100 (4")	100-100	35	118	1059x414x469
100 EWS 45-22-5.5	5.5	7.5	2900	100	28	100 (4")	100-100	30	93	954x404x437
100 EWS 100-15-7.5/4	7.5	10	1450	140	21	100 (4")	100-100	55	150	1154x549x532
100 EWS 65-15-5.5/4	5.5	7.5	1450	120	18	100 (4")	100-100	55	145	1154x549x532
80 EWS 30-36-7.5	7.5	10	2900	75	41	80 (3")	80-80	30	118	1059x414x469
80 EWS 30-30-5.5	5.5	7.5	2900	70	35	80 (3")	80-80	30	93	954x404x437
80 EWS 45-22-7.5/4	7.5	10	1450	80	26	80 (3")	80-80	30	150	1127x550x450
50 EWS 20-45-7.5	7.5	10	2900	45	50	50 (2")	50-50	20	120	1032x430x360

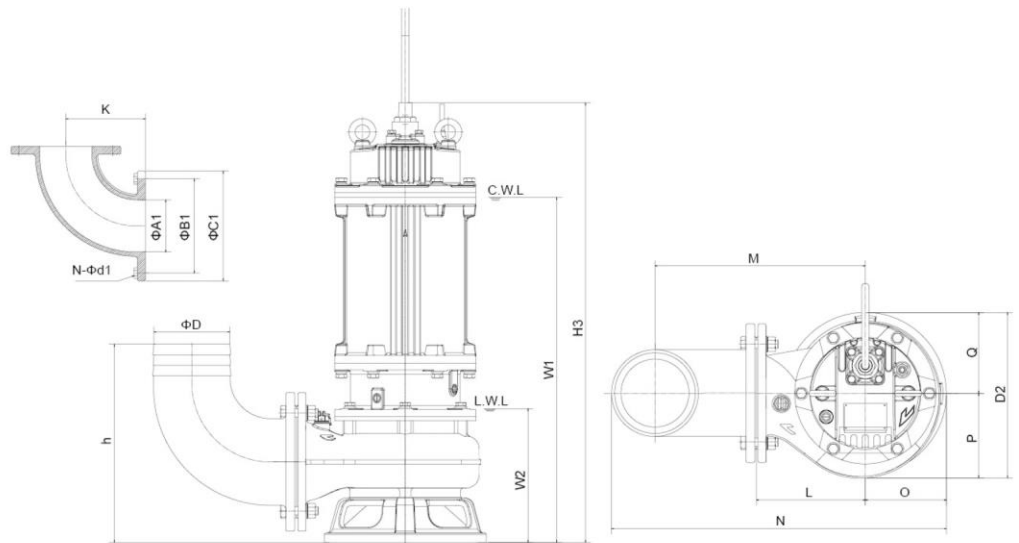
Materials Table



No.	Part	Material
1	Cable	
2	Cable holder	HT200
3	Upper Cover	HT200
4	Upper bearing seat	HT200
5	Frame	HT200
6	Stator	
7	Rotor	
8	Bearing	
9	Oil chamber	HT200
10	* Detector	
11	Mechanical seal	Silicon/Carbon
12	Mechanical seal	Silicon/Carbon
13	Release valve	
14	Pump casing	HT200
15	Impeller	HT200
16	Baseplate	HT200
17	Pump body	HT200
18	* Floating switch	
19	* Thermal sensor	
20	Bearing	
21	Ring	06cR19n110
22	* Signal cable	

* Optional

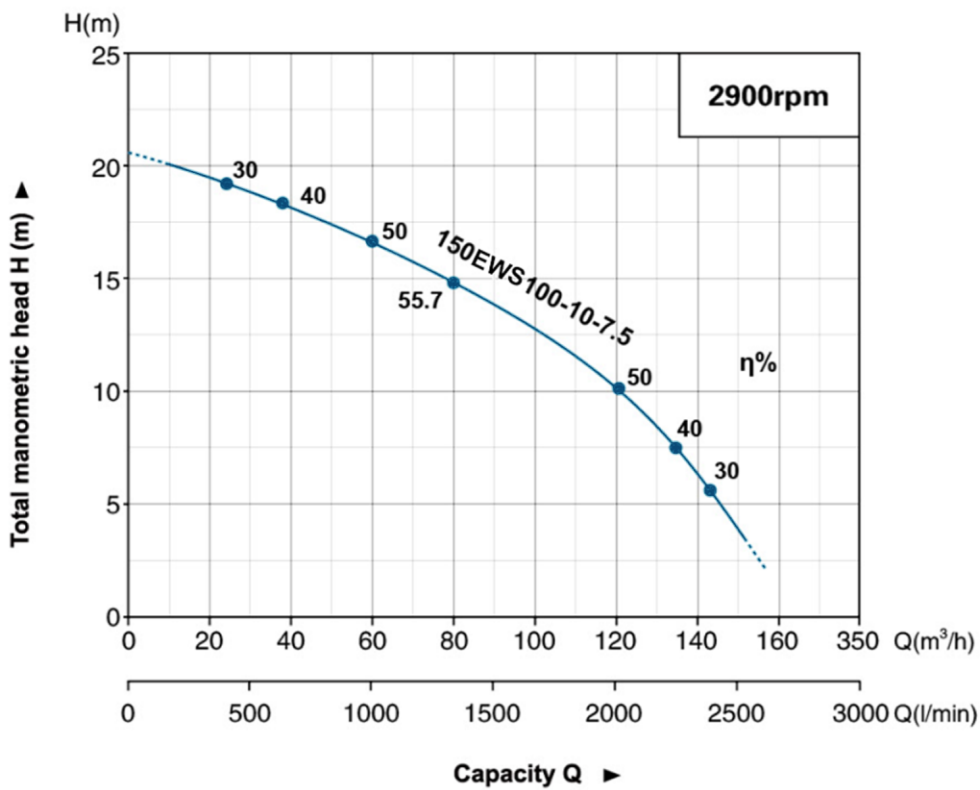
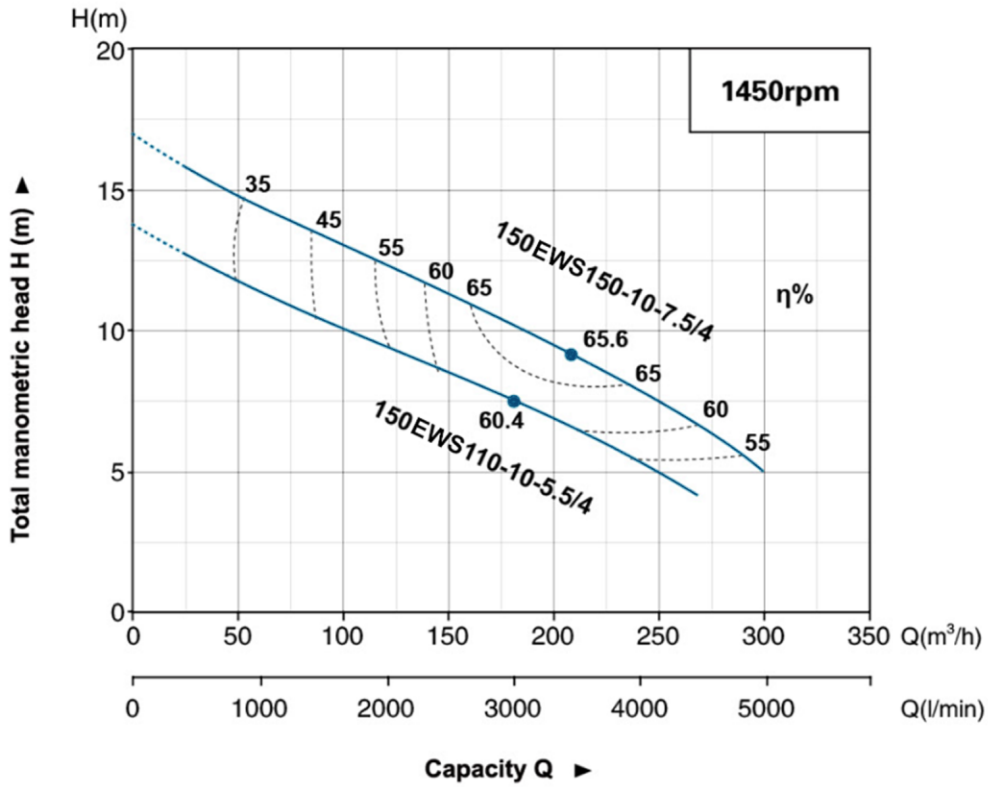
Dimension



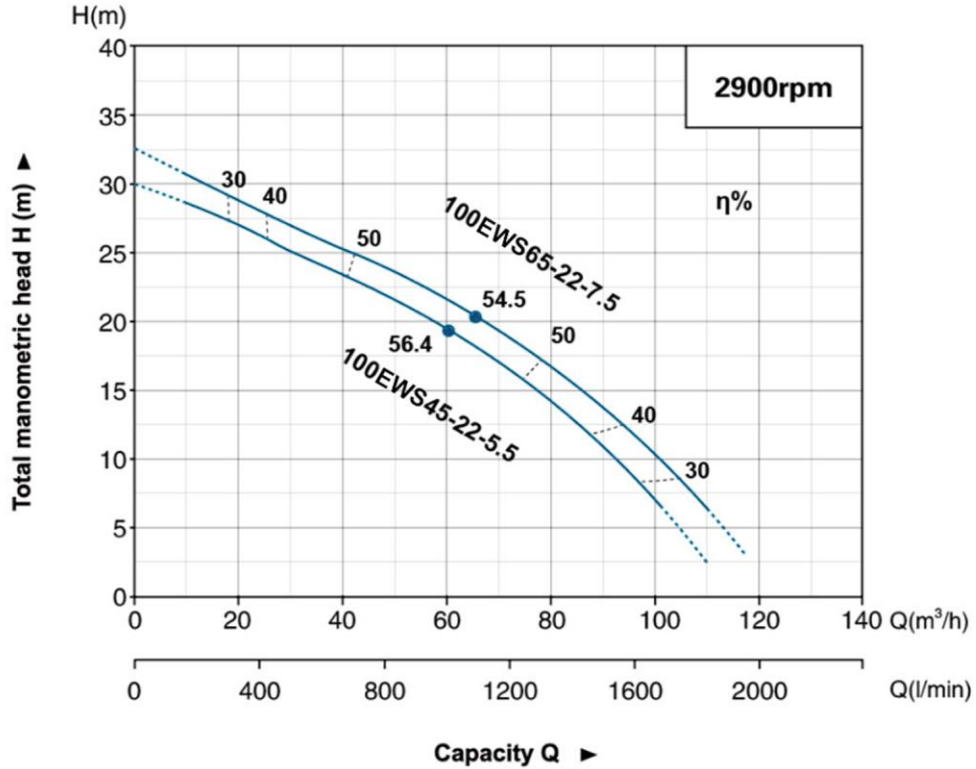
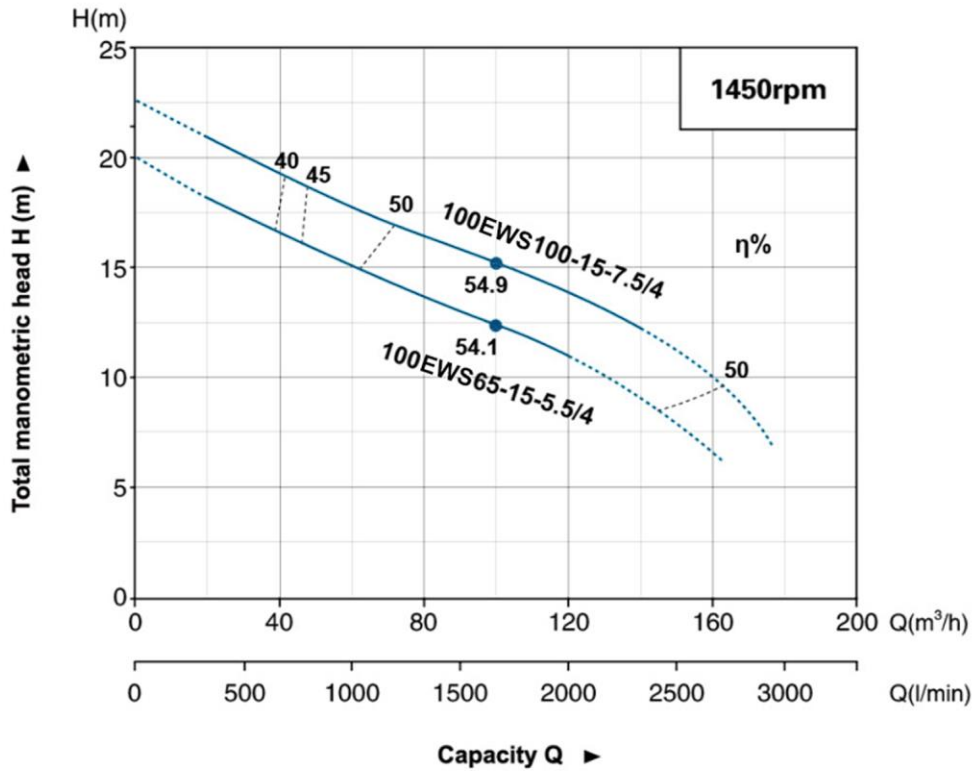
W1: Continuous operation water level W2: Lowest operation water level

Model	ΦD	ΦA1	ΦB1	ΦC1	N-Φd1	h	W1	W2	H3	K	N	O	P	Q	L	M	D2
150EWS 150-10-7.5/4	150	150	225	265	8-Φ18	465	756	330	910	230	770	195	217	170	300	500	387
150EWS 110-10-5.5/4	150	150	225	265	8-Φ18	465	756	330	910	230	770	195	217	170	300	500	388
150EWS 100-10-7.5	150	150	225	265	8-Φ18	379	660	241	811	230	640	145	162	155	210	410	317
100EWS 65-22-7.5	100	100	170	210	4-Φ18	315	639	220	790	150	530	155	155	155	200	340	310
100EWS 45-22-5.5	100	100	170	210	4-Φ18	315	609	220	744	150	530	155	155	155	200	340	310
100EWS 100-15-7.5/4	100	100	170	210	4-Φ18	390	722	295	873	150	655	187	200	175	280	420	373
100EWS 65-15-5.5/4	100	100	170	210	4-Φ18	390	722	295	873	150	655	187	200	175	280	420	373
80EWS 30-36-7.5	80	80	150	190	4-Φ18	332	640	215	785	140	520	143	155	155	200	335	310
80EWS 30-30-5.5	80	80	150	190	4-Φ18	332	607	215	735	140	515	136	155	155	200	335	310
80EWS 45-22-7.5/4	80	80	150	190	4-Φ18	390	679	285	880	155	615	173	179	260	395	349	390
50EWS 20-45-7.5	50	50	110	140	4-Φ14	284	626	221	777	105	484	133	137.5	200	320	272	284

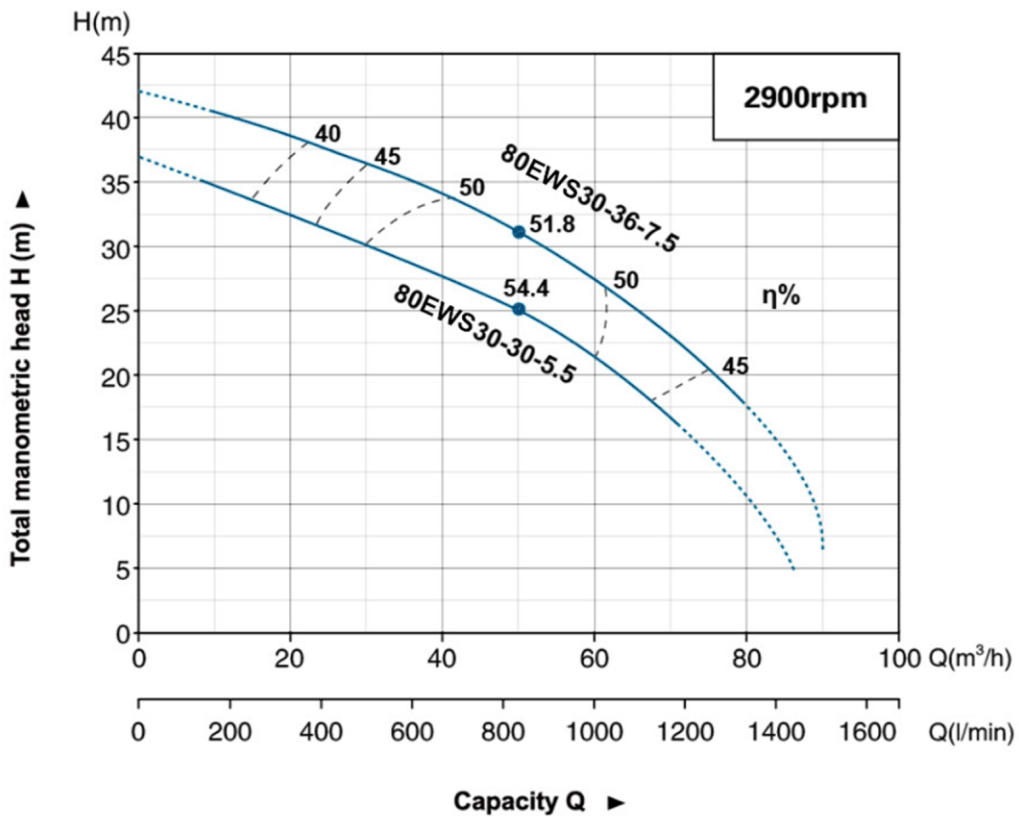
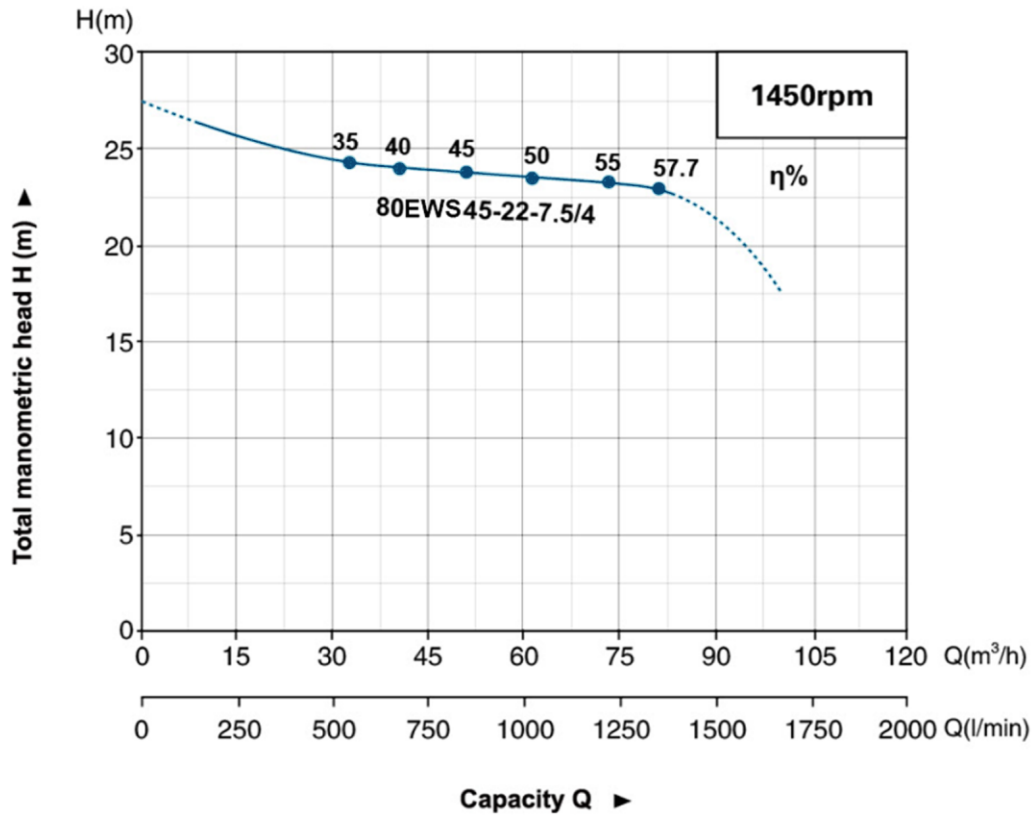
Hydraulic Performance Curves



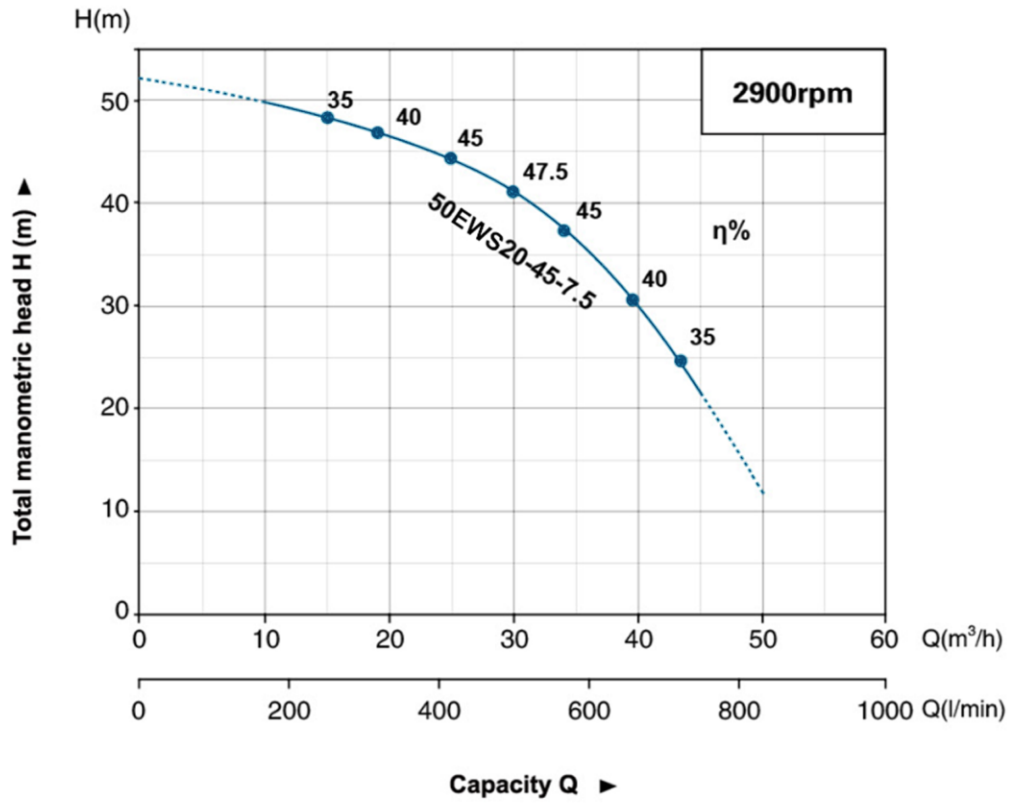
Hydraulic Performance Curves



Hydraulic Performance Curves



Hydraulic Performance Curves





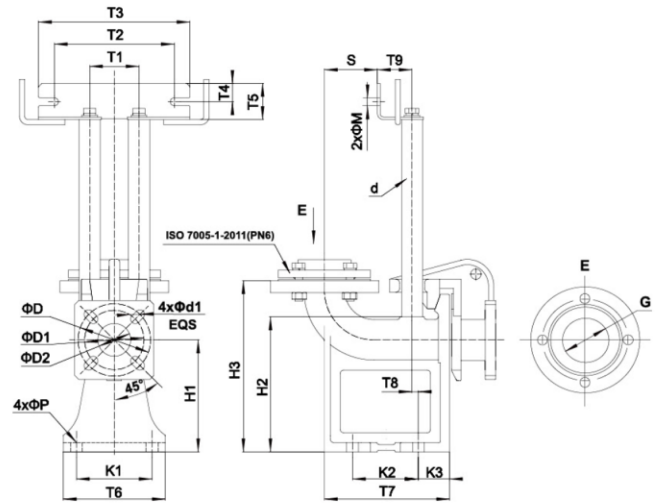
QDC (Quick Discharge Connection)



Chain

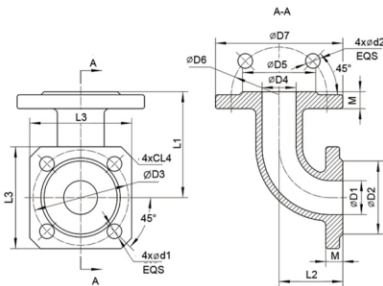


Guide Rail

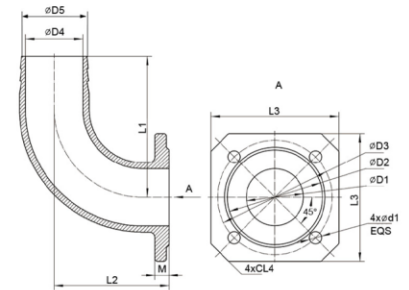


Dimension

Model	D	D1	D2	T1	T2	T3	T4	T5	T6	T7	T8	T9	K1	K2	K3	H1	H2	H3	S	M	P	d	d1	G
WS50-50(PN6)	110	90	50	75	182	230	28	55	165	190	12	52.5	115	100	45	170	205	260	80.5	12	18	25	14	G2
WS65-65(PN6)	130	-	65	85	182	230	28	55	190	210	17	59	145	120	45	175	220	270	89	12	18	32	14	G2.5
WS80-80(PN6)	150	-	80	85	182	230	28	55	220	242	27	59	175	160	41	190	246	290	115	12	18	32	18	G3



Flange Elbow



Hose Coupling

Model	D1	D2	D3	D4	D5	D6	D7	L1	L2	L3	L4	M	d1	d2
32-32 Flange Elbow	32	69	90	32	69	90	120	100	60	96	10	16	14	14
40-50 Flange Elbow	40	78	100	50	88	110	140	120	60	110	15	16	14	14
50-50 Flange Elbow	50	88	110	50	88	110	140	105	105	120	15	16	14	14
65-65 Flange Elbow	65	108	130	65	108	130	160	130	130	145	20	16	14	14
80-80 Flange Elbow	80	124	150	80	124	150	190	155	155	145	15	18	18	18

Model	D1	D2	D3	D4	D5	L1	L2	L3	L4	M	d1
• 50-40 Hose Coupling	50	88	110	38	48	115	65	120	15	16	14
• 65-50 Hose Coupling	65	108	130	51	61	125	68	145	20	16	14
• 80-60 Hose Coupling	80	124	150	60	70	140	75	145	15	16	18
50-50 Hose Coupling	50	88	110	50	58	140	120	120	15	16	14
65-65 Hose Coupling	65	108	130	65	74	160	130	145	20	18	14
80-80 Hose Coupling	80	124	150	80	87	190	135	145	15	18	18

• Product standard

PT.Elkan Mepindo Perkasa

Kawasan Pergudangan Bizpark
Jl.Raya Bekasi KM 21.5 Blok A2/11
Jakarta 13920

Email : info@elkanmepindo.com

Website : www.elkanmepindo.com

Telp : 021-4612462

